

# Instruction Sheet

## Subject: 8263463 Auto Reverse Basket Lift Retrofit Instructions

**Models affected: FilterQuick (FQGLA-T and FQG30-T) Gas Fryers**

Follow these instructions to install the auto reverse retrofit basket lift kit. This allows the basket lift, if it isn't in the fully down position within ten (10) seconds, to automatically reverse and raise.

**Special tools required: Pin Pusher**

In This Kit		
Part #	Description	Qty
1087776	HARNESS 6-PIN/12PIN MOLEX	1
4060070	BOARD	1
1087775	HARNESS 4-PIN MOLEX	2
8140015	ZIP TIE	2
8090237	4-40 Nuts	5
8160862	3M VHB ADHESIVE TAPE	1
8103141	SOUND DEVICE	1
8102763	SPACER	4
8197483	INSTRUCTIONS	1

1. Disconnect power from the fryer.
2. Remove the fryer from the hood to gain access to the rear of the fryer.
3. Remove the basket lift cover to expose the inside of the basket lift (see Figure 1).
4. Unplug the basket lift connection on the bottom of the basket lift (see Figure 2).



Figure 1



Figure 2

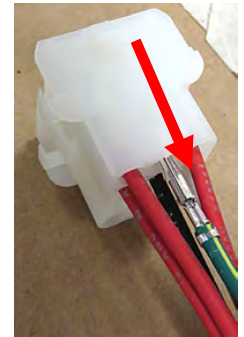


Figure 3

5. Using a pin pusher remove the green/yellow strip ground wire from pin 2 of the new supplied harness (see Figure 3).

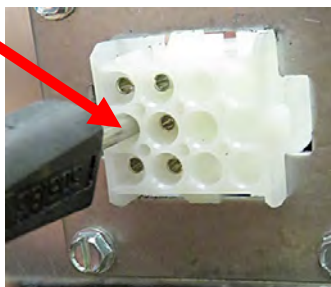


Figure 4

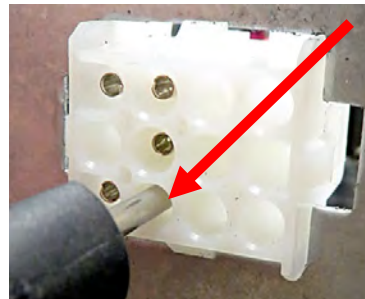


Figure 5

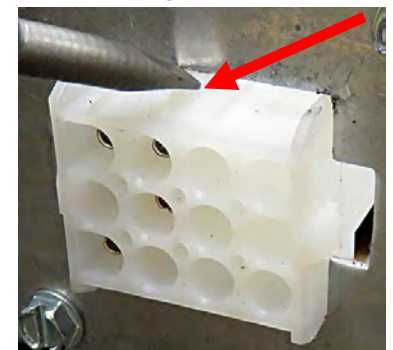


Figure 6

6. Using a pin pusher remove the green ground wire from pin 2 (see Figure 4) of the connector on the bottom of the basket lift.
7. Using a pin pusher remove the white wire from pin 6 (see Figure 5) of the connector on the bottom

of the basket lift.

8. Using a screwdriver, remove the Molex connector out of the metal housing (see Figures 6 and 7).

9. Cut the two (2) zip ties securing the wires (see Figure 8).

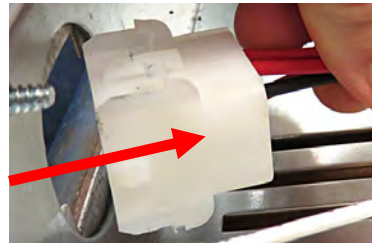


Figure 7

10. Using needle nose pliers, remove both wires from the bottom right switch, as viewed from the rear of the fryer (see Figure 9).

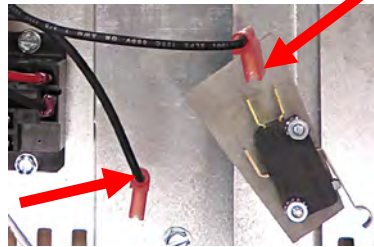


Figure 9

11. Using needle nose pliers remove the wire from the COM terminal on the top right switch, as viewed from the rear of the fryer (see Figure 10).



Figure 10

12. Using needle nose pliers remove the wire from the COM terminal on the top left switch, as viewed from the rear of the fryer (see Figure 10).

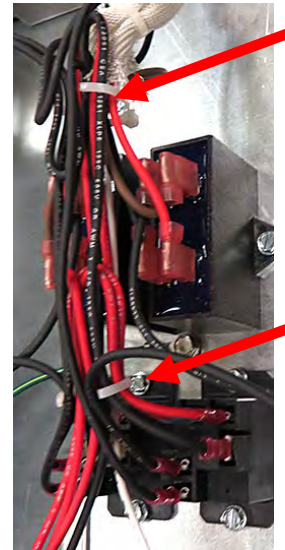


Figure 8

13. Using needle nose pliers, remove both wires from the bottom left switch, as viewed from the rear of the fryer (see Figure 9).

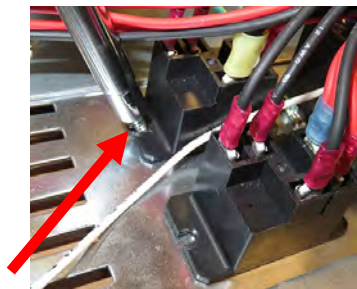


Figure 11

14. Using a 1/4" nut driver, remove the four (4) screws attaching the relays at the bottom of the basket lift enclosure (see Figure 11).



Figure 12

15. Remove the relays and attached wires from the enclosure (see Figure 12) and discard.

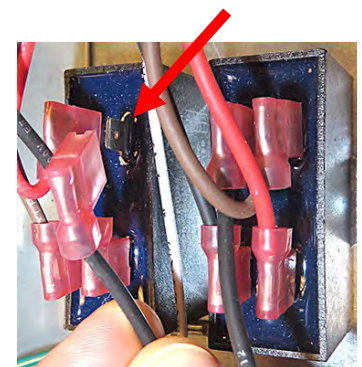


Figure 13

16. Using needle nose pliers remove the loose black wire from the top right connector of the left capacitor (see Figure 13).

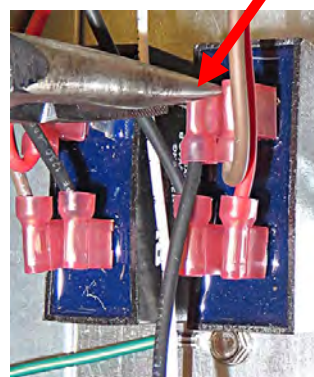


Figure 14

17. Using needle nose pliers remove the loose black wire from the top left connector of the right capacitor (see Figure 14).

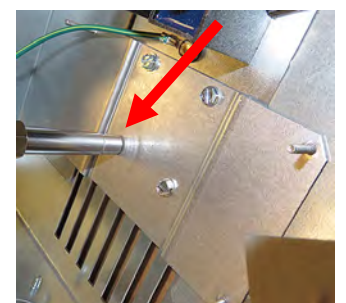


Figure 15

18. Using the four screws removed from step 14 above, attach the new supplied bracket to the assembly as shown (see Figure 15).

19. Slip the supplied spacers over the studs of the new bracket (see Figure 16).

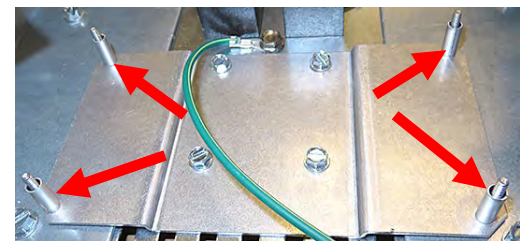


Figure 16



20. Slide the circuit board onto the studs as shown (see Figure 17).

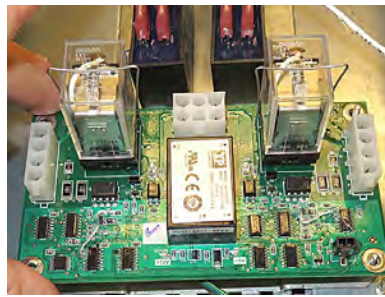


Figure 17

21. Attach the circuit board with supplied 4-40 hex nuts.

22. Insert the pin of the green/yellow ground wire, removed in step 5, into the number 2 pin position, of the 12-pin Molex female connector, in the new supplied harness (see Figure 18). Give a gentle tug on the wire to ensure the pin is fully seated into the connector.



Figure 18



Figure 19

23. Insert the 12-pin female end into the opening in the bottom of the basket lift assembly box (see Figure 19).

24. Insert the pin of the white wire, removed in step 7 into the number 6 pin position, of the 12-pin Molex male connector, in the new supplied harness (see Figure 20). Give a gentle tug on the wire to ensure the pin is fully seated into the connector.

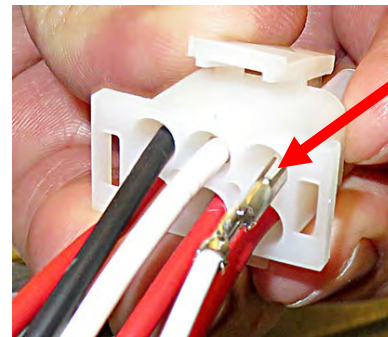


Figure 20

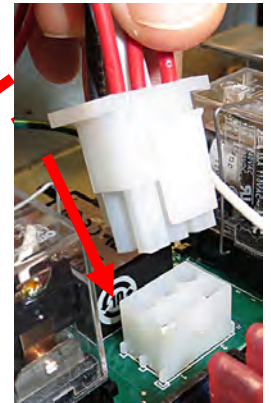


Figure 21

25. Plug the 6-pin connector from the previous step into the 6-pin connection on the new circuit board (see Figure 21).

26. Plug in one of the 4 pin harnesses to the right side of the new board (see Figure 22).

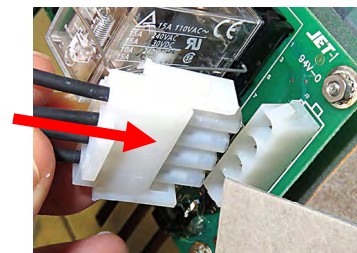


Figure 22

27. Connect pin-4 (bottom) wire to the COM position of the lower right switch (see Figure 23 and wiring diagram on last page).

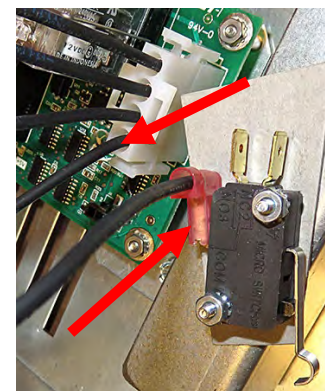


Figure 23

28. Connect pin-3 wire to the N/C position of the lower right switch (see Figure 24 and wiring diagram on last page).

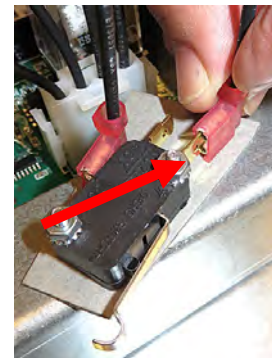


Figure 24

29. Connect pin-2 wire to the open connector on the right capacitor (see Figure 25 and wiring diagram on last page).

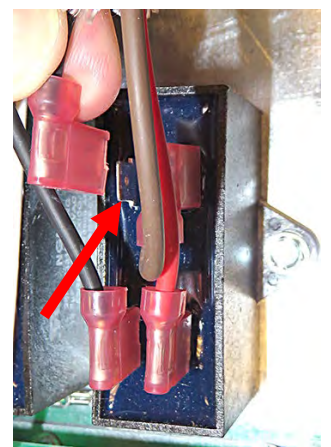


Figure 25

30. Connect pin-1 wire to the COM position of the top right switch (see Figure 26 and wiring diagram on last page).



Figure 26

31. Plug in the other 4 pin harness to the left side of the new board.

32. Connect pin-4 (bottom) wire to the COM position of the lower right switch (see Figure 27 and wiring diagram on last page).



Figure 27

33. Connect pin-3 wire to the N/C position of the lower left switch (see Figure 28 and wiring diagram on last page).



Figure 28

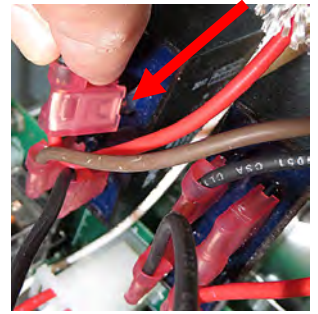


Figure 29

34. Connect pin-2 wire to the open connector on the left capacitor (see Figure 29 and wiring diagram on last page).

35. Connect pin-1 wire to the COM position of the top left switch (see Figure 30 and wiring diagram on last page).

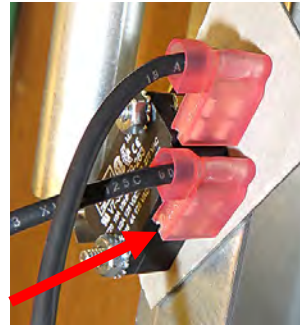


Figure 30

36. Apply VHB adhesive tape to the rear of the speaker (see Figure 31).



Figure 31

37. Peel off the tape backing and apply to the basket lift case as shown (see Figure 32).

38. Plug the speaker into the 2-pin connector on the board (see Figure 33).

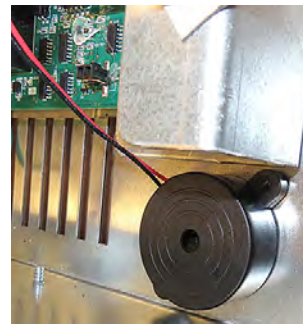


Figure 32

39. Carefully gather the wires towards the middle of the box and zip tie together out of the way (see Figure 34).



Figure 33

40. Reattach the basket lift cover.

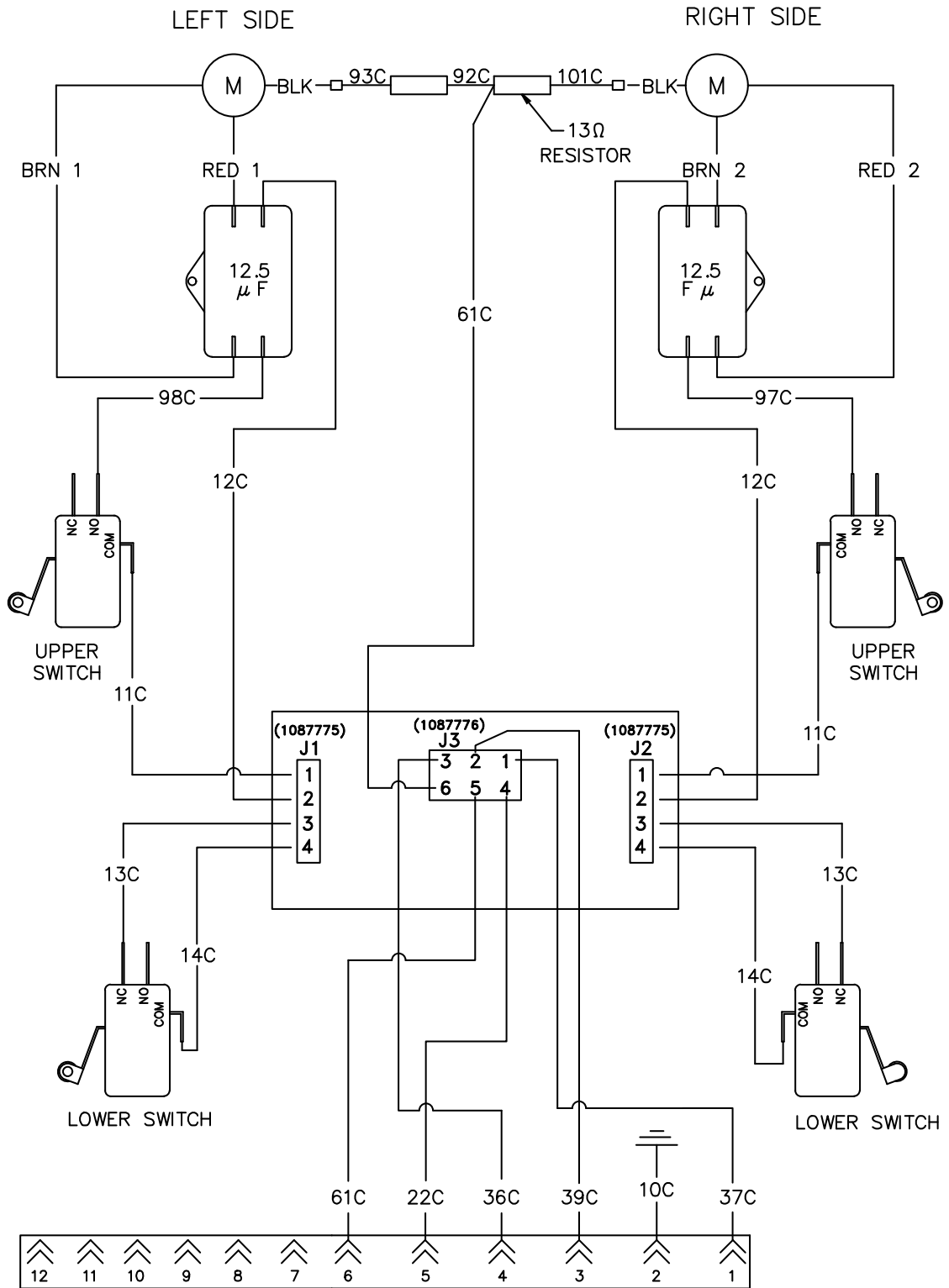
41. Reconnect power.

42. Reposition the fryer under the hood.

43. Test and ensure the basketlift works properly.



Figure 34



REFERENCES TO LEFT & RIGHT ARE FROM THE REAR OF THE FRYER

8052132A